

ANSWER SHEET

Lesson 1 - H, L, L, S, L, H, S, H, H, S

Lesson 2 - B, D, G, F, D, B, E, G



Lesson 5 - B, A, F, D, G, F, A, B



Lesson 3 - F, E, C, E, A, F, C, A



Lesson 6 - A, E, G, E, A, C, G, C

Lesson 4 - D, F, F, G, B, C, A, B
E, G, E, A, D, F, B, E

Lesson 7 - E, G, G, E, A, F, C, F, E, A, G, C



Lesson 9 - BAD/CAB/DEAF/DAD (There is more than one answer to this one)



Lesson 10



Lesson 11

1. Quarter note,
2. Whole rest,
3. Eighth rest,
4. Half note,
5. Eight note,
6. Whole note,
7. Quarter rest,
8. Half rest.

Lesson 13

2, 4, 1, 1/2, 1, 2, 1, 2, 4, 1/2

- 1.
- 2.
- 3.
- 4.
- 5.
- 6.
- 7.
- 8.

Lesson 15

3, 1 1/2, 3, 1 1/2, 4, 4, 1 1/2, 6, 3 1/2, 4.

Lesson 17



Lesson 17 (cont.)



Lesson 18 - 1, 1/4, 2, 3/4, 3, 2/4, 4, 3/4



ANSWER SHEET

Lesson 19 (There is more than one answer to this one)

.....

Add the rests of the proper value to complete these measures.

Lesson 20

Lesson 21

F# C# D# A# G# F#

Lesson 22

Bb Gb Db Bb Ab Eb

Lesson 23

D# F# C# A# G# G#

F# Gb Db C# F# Eb

Lesson 24 — W, W, H, W, H, W, H, W

Lesson 25

Lesson 26 — Skip, Repetition, Step, Skip, Repetition, Step

Lesson 27

① ② ③ ④ ⑤ ⑥

Lesson 29

1. Staff, 2. Treble clef, 3. Leger, 4. Quarter note,
5. Flat, 6. Whole rest, 7. 2, 8. Great, 9. Half,
10. Accidental, 11. Raises, 12. Quarter rest, 13 Bass,
14. Dotted half note, 15. Natural, 16. 7

ANSWER SHEET

Lesson 1 (More than one correct answer)



BED, CABBAGE, FED, BEAD

Lesson 5 — Ab, D, Bb, F, E, B



Lesson 6 — For answer, check against lessons 3 & 4

Lesson 7



Lesson 9



1. 3, 2. 1½, 3. 3.1, 4. 2, 5. 2, 6. ½, 7. 3, 8. 2

Lesson 10

1. \dot{d} , 2. $\frac{3}{4}$, 3. \circ , 4. 2, 5. \dot{d} , 6. 4

Lesson 11



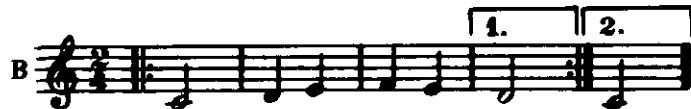
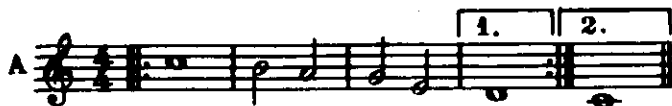
Lesson 12 — 1. \dot{d} , 2. \dot{d} , 3. $\frac{6}{8}$, 4. $\frac{6}{8}$, 5. $\frac{3}{4}$, $\frac{3}{2}$,
6. \dot{d} , 7. C or $\frac{4}{4}$, 8. $\frac{6}{8}$, 9. \dot{d} , 10. $\frac{6}{8}$, 11. 2, 4 or 8, 12. cut

Lesson 13 — 1. \dot{d} | \dot{d} = 3 beats 2. \circ | \dot{d} = 7 beats 3. \dot{d} | \dot{d} = 2 beats 4. \dot{d} | \dot{d} = 2 beats

Lesson 14 — Tie slur
slur slur
tie tie

Lesson 15 — 1. \dot{d} 2. \dot{d} 3. $\frac{4}{4}$ 4. end 5. \dot{d}
6. \dot{d} gets one beat, 7. beats in a measure, 8. \circ

Lesson 16



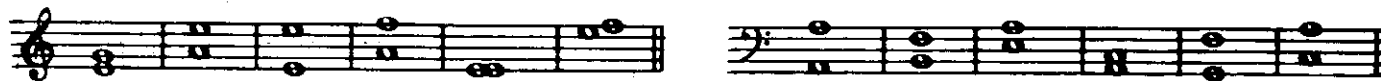
Lesson 17



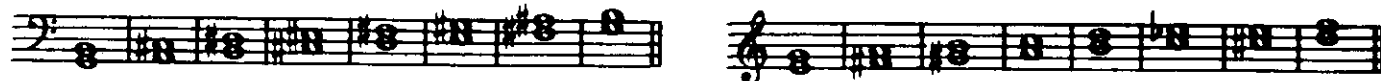
Lesson 18 — 4th, 2nd, 5th, 6th, 7th, 3rd
5th, 6th, 3rd, 4th, 4th, 7th

ANSWER SHEET

Lesson 19



Lesson 20 - m3, m3, M3, M3, m3, m3, M3, m3



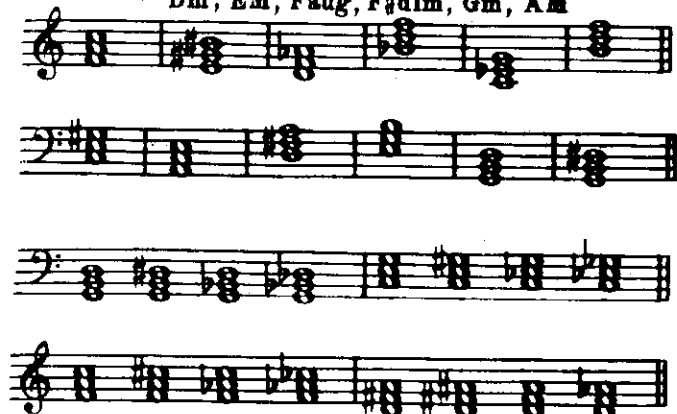
Lesson 21



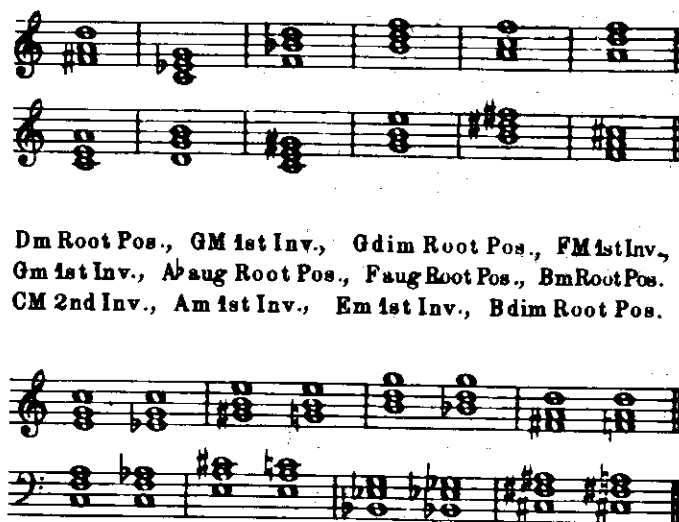
Lesson 22



Lesson 23 - GM, Am, BbM, Bdim, C aug, Dm, Dm, EM, F aug, F#dim, Gm, AM

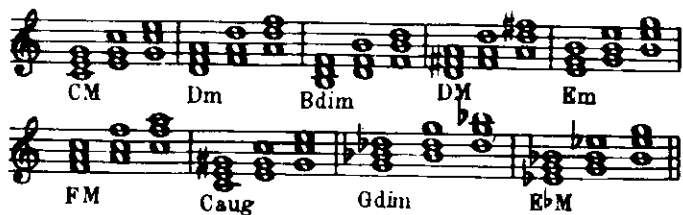


Lesson 25



Dm Root Pos., GM 1st Inv., Gdim Root Pos., FM 1st Inv., Gm 1st Inv., Ab aug Root Pos., F aug Root Pos., Bm Root Pos., CM 2nd Inv., Am 1st Inv., Em 1st Inv., Bdim Root Pos.

Lesson 24



Lesson 26 1. Louder, 2. soft, 3. *pp*, 4. loud, 5. *mf*, 6. medium, 7. softer, 8. *f*

Lesson 27 1. rit., 2. slow, 3. Grave, 4. very fast, 5. Vivace, 6. gradually faster, 7. at a moderate speed, 8. Adagio




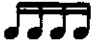
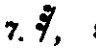
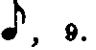
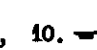
Lesson 29 1.D, 2.O, 3.G, 4.J, 5.L, 6.I, 7.C, 8.A, 9.B, 10.E, 11.H, 12.P, 13.N, 14.K, 15.M, 16.F

ANSWER SHEET

Lesson 1

A, B, D, E, B, E, A, F, C, B, E, D, C, D, C

Lesson 2

1. 2, 2. 1, 3. 1, 4. 1½, 5. 1,
6. 2, 7. 2, 8. ½, 9. 3, 10. 41. — 2. , 3. , 4. 7, 5. ,
6. , 7. , 8. , 9. , 10. —

Lesson 3

1. 6/8, 2. 9/8, 3. 3/4, 4. 12/8, 5. 3/8

Lesson 5

1. 9/8  ||
2. 5/4  ||
3. 3/2 or 6/4  ||
4. 3/4  ||
5. 2/4  ||

Lesson 6



4th, Octave, Prime, 5th, 4th, 5th

Lesson 7



Maj., min., min., Perf., Maj., Perf., Maj., min.

Lesson 8



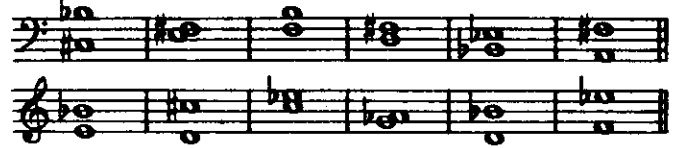
Lesson 9

1. Diminished, 2. minor, 3. Perfect, 4. dim 5th, 5. Maj 6th
6. Aug 2nd, 7. min 3rd.

Lesson 10

Maj 3rd, min 6th, Aug 4th, Maj 6th, Perf 4th, min 2nd,
min 6th, dim 5th, Maj 2nd, Maj 7th, min 3rd, dim 7th

Lesson 10 cont.



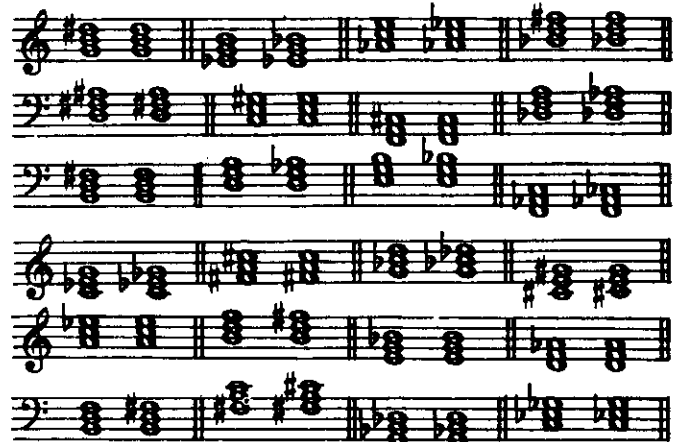
Lesson 11

1. min + Maj = minor, 2. min + min = Diminished,
3. Maj + Maj = Augmented, 4. Maj + min = Major

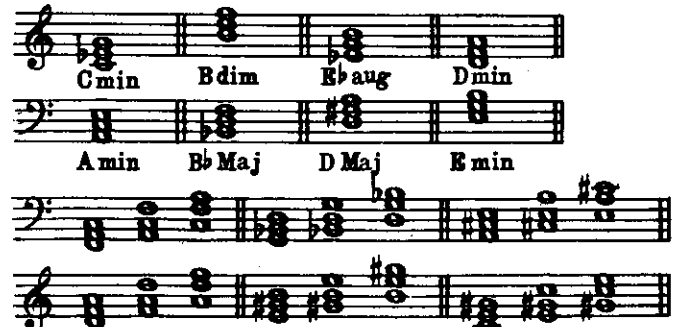
Lesson 12



Lesson 13



Lesson 14

G min 1st Inv., D Maj 2nd Inv., B dim Root Pos., A Maj 2nd Inv.,
E♭ Aug 1st Inv., B♭ Maj 1st Inv., E min 2nd Inv.,
F Aug 2nd Inv., B♭ min Root Pos., A dim Root Pos.

ANSWER SHEET

Lesson 15

G Maj7th, G(Dom)7th, F(Dom)7th, CMaj7th,
E(Dom)7th, F Maj7th



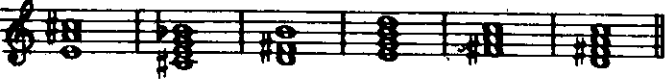
Lesson 16

A min 7th, C#dim 7th, G min 7th,
D min 7th, B dim 7th, E min 7th

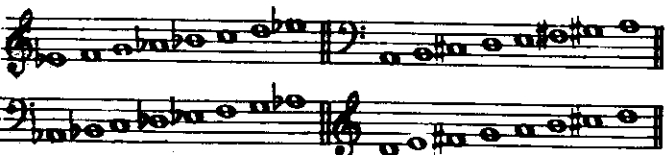


Lesson 18

1. 3; 2. Root, 3rd, 5th; 3. Major, minor, Augmented,
Diminished; 4. min 3rd + min 3rd; 5. Raise the 5th;
6. Root Position; 7. Dominant 7th, minor 3rd + Maj 3rd + min 3rd.
C#dim 7, E min 7, A min, D Maj 7, CMaj 1st Inv, B dim,
Bb Maj, F Maj 1st Inv, G min 7, C aug, G min 1st Inv, A(dom) 7.



Lesson 19



Key of D Major, E Major, F Major
A, Ab, B, Eb, D, F



Lesson 21

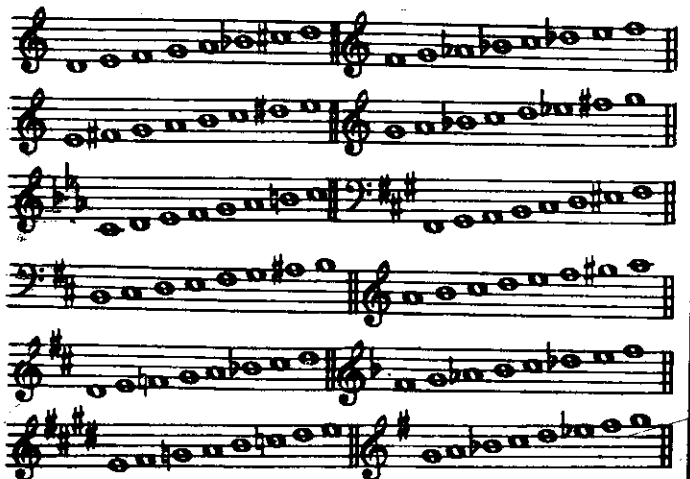
C#min, Fmin, F#min, Bmin, Dmin, Cmin



Lesson 22

Melodic, Natural, Melodic, Harmonic

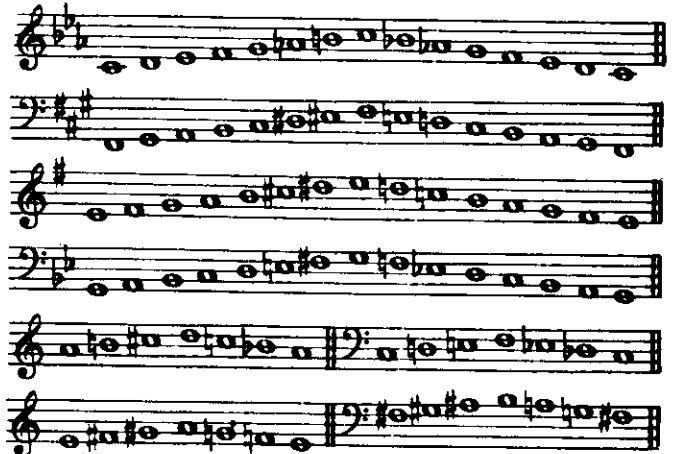
Lesson 23



Lesson 24

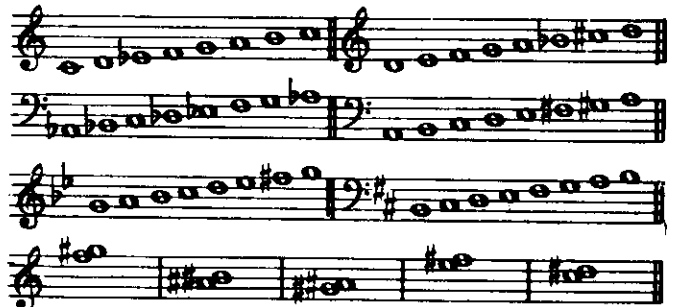


Lesson 25



Lesson 26

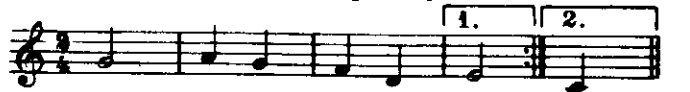
A Major, F# Natural Minor,
G Natural Minor, F Natural Minor,



B Harmonic Minor, A Melodic Minor,
D Major, D Harmonic Minor

Lesson 27

1. Fine, 2. End, 3. Φ , 4. Beginning



Lesson 28

1.B, 2.G, 3.E, 4.C, 5.H, 6.D, 7.F, 8.A

Lesson 29

1.X, 2.P, 3.F, 4.J, 5.O, 6.K, 7.N, 8.D, 9.S, 10.R,
11.G, 12.Q, 13.B, 14.A, 15.H, 16.T, 17.L, 18.C,
19.I, 20.Y, 21.Z, 22.U, 23.V, 24.W, 25.E, 26.M