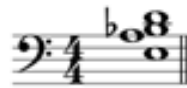


BOX 1



	C7 (9,13)	Gb7 (#9,b13) (Gb7 altered)	Gm6/9	Em7b5 (11)*	Bbmaj7 (b5)	A7sus4 (b9)**
A	13	#9	9	11	7	1
E	3	b7	6	1	b5	5
D	9	b13	5	b7	3	sus4
Bb	b7	3	b3	b5	1	b9

BOX 2



	C7 (9,13)	Gb7 (#9,b13) (Gb7 altered)	Gm6/9	Em7b5 (11)*	Bbmaj7 (b5)	A7sus4 (b9)**
D	9	b13	5	b7	3	sus4
Bb	b7	3	b3	b5	1	b9
A	13	#9	9	11	7	1
E	3	b7	6	1	b5	5

* The minor 3rd is not present but the chord voicing strongly suggests the m7b5 chord.

** The b7 is not present but the chord voicing strongly suggests the dom 7th chord.