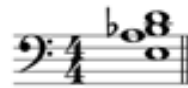


# BOX 1



	C7 (9,13)	G $\flat$ 7 (#9, $\flat$ 13) (G $\flat$ 7 altered)	Gm6/9	Em7 $\flat$ 5 (11)*	B $\flat$ maj7 ( $\flat$ 5)	A7sus4 ( $\flat$ 9)**
A	13	#9	9	11	7	1
E	3	$\flat$ 7	6	1	$\flat$ 5	5
D	9	$\flat$ 13	5	$\flat$ 7	3	sus4
B $\flat$	$\flat$ 7	3	$\flat$ 3	$\flat$ 5	1	$\flat$ 9

# BOX 2



	C7 (9,13)	G $\flat$ 7 (#9, $\flat$ 13) (G $\flat$ 7 altered)	Gm6/9	Em7 $\flat$ 5 (11)*	B $\flat$ maj7 ( $\flat$ 5)	A7sus4 ( $\flat$ 9)**
D	9	$\flat$ 13	5	$\flat$ 7	3	sus4
B $\flat$	$\flat$ 7	3	$\flat$ 3	$\flat$ 5	1	$\flat$ 9
A	13	#9	9	11	7	1
E	3	$\flat$ 7	6	1	$\flat$ 5	5

\* The minor 3rd is not present but the chord voicing strongly suggests the m7 $\flat$ 5 chord.

\*\* The  $\flat$ 7 is not present but the chord voicing strongly suggests the dom 7th chord.

# BOX 3



	G7 (b9,13)	E7 (b9,)	Db7(#9)	Bb5 (b9, #11)	Bbmaj7 (b5)	F, Ab, B, or D diminished with W.T. extension
E	13	1	#9	#11	7	
B	3	5	b7	b9	b5	
Ab	b9	3	5	b7	3	
F	b7	b9	3	5	1	

# BOX 4



	Dmi-ma7(9)	G7 (9,#11,13)	Bm7b5 (9,11)	Db7(#9,b13)
E	9	13	11	#9
C#	7	#11	9	1
A	5	9	b7	b13
F	3	b7	b5	3

## Major and Minor Rootless Voicings



A position and B position Dm7 (9)



A position and B position Cmaj7 (9)



A position and B position C6/9 (Cmaj7)

## Other Rootless Chords



A7(b9, b13)

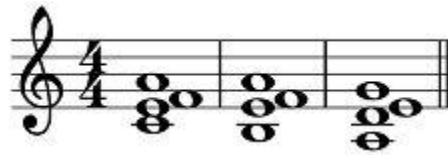


D7<sup>b</sup>9, F7<sup>b</sup>9,  
A<sup>b</sup>7<sup>b</sup>9, B7<sup>b</sup>9

# Typical II - V - I



Dm9 - G7(9,13) - Cmaj6/9  
(box 1)



Dm9 - G7(9,13) - Cmaj6/9  
(box 2)



Dm9 - G7(b9,13) - Cmaj6/9  
(box 3)



Am9    D7alt    Gmaj6/9  
(box 1)